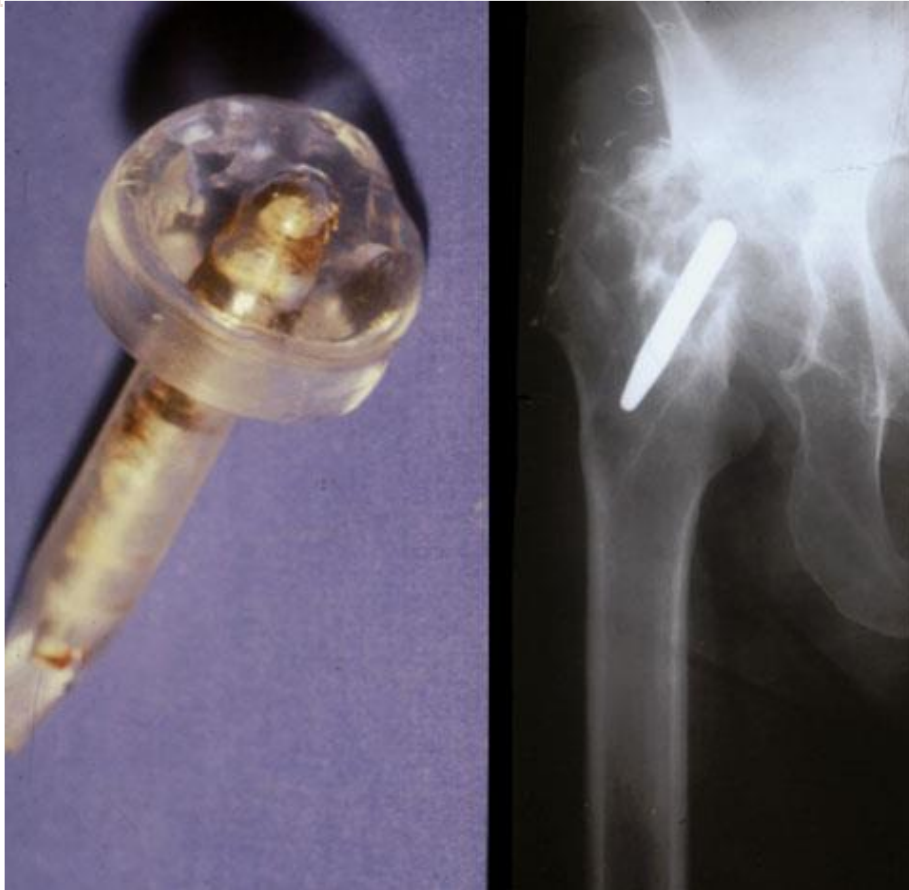
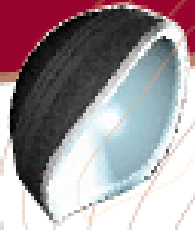


# HISTORIQUE



**Prothèse de Judet (tête acrylique)**



# HISTORIQUE



**Tête acrylique**

**Tête métallique**

# HISTORIQUE



**Thompson**



**Moore**



# HISTORIQUE



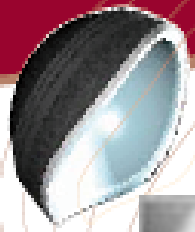
LUXATIONS



# HISTORIQUE

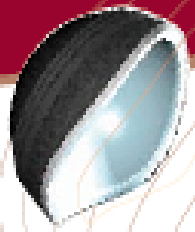
## PTH de Charnley



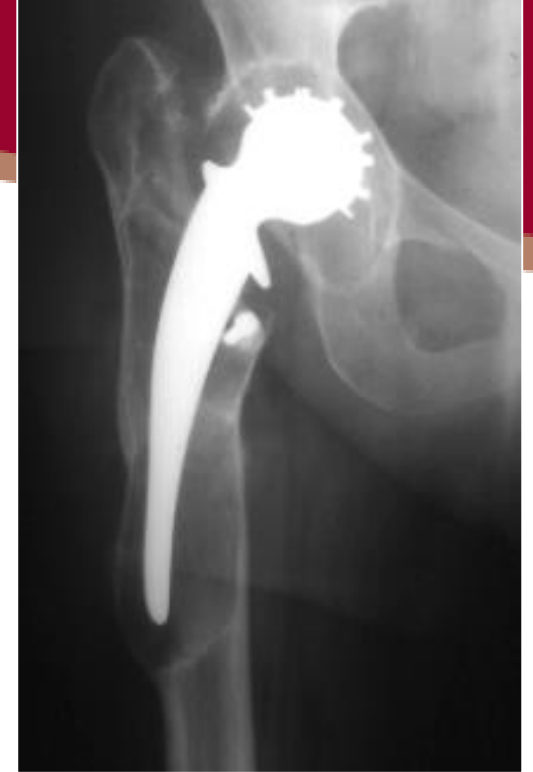


# HISTORIQUE





# HISTORIQUE



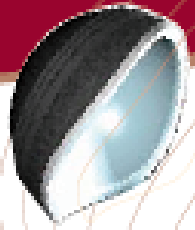
**Prothèse de Mac Kee Farrar**

# HISTORIQUE

## AMELIORATION DES MOYENS DE FIXATION





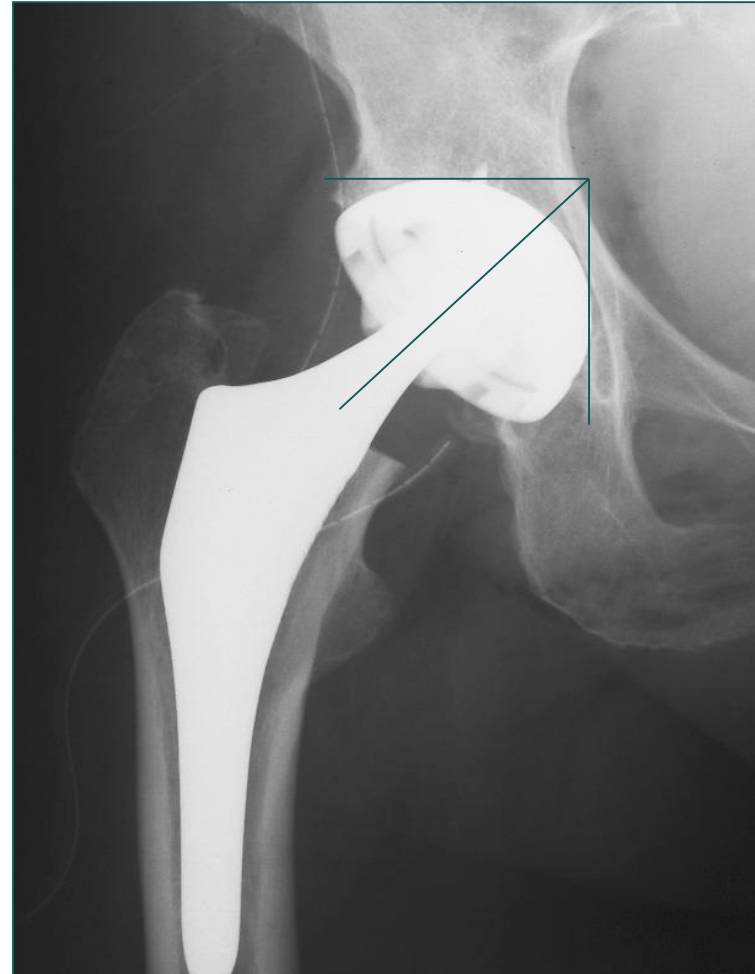


# HISTORIQUE

## « *GUERRE DE RELIGION* »



**CIMENTEURS**



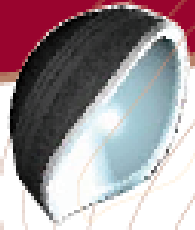
**NON CIMENTEURS**



# **HISTORIQUE**

**LES DEUX PRINCIPALES  
PREOCCUPATIONS DES CHIRURGIENS  
DE LA HANCHE SONT :**

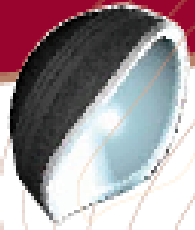
- L'INSTABILITE PROTHETIQUE**
- L'USURE**



# HISTORIQUE

## LA LUXATION





# HISTORIQUE

## L'USURE



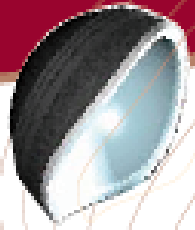
# HISTORIQUE

L'USURE



GRANULOME





# HISTORIQUE

GRANULOME

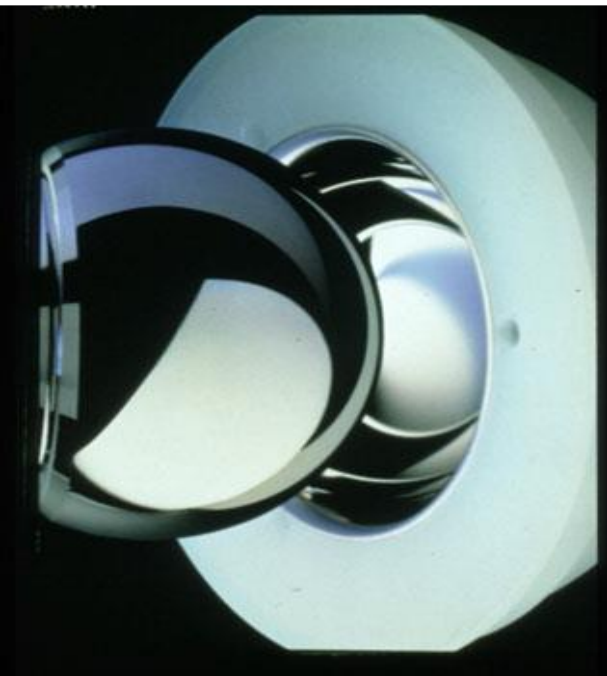


OSTEOLYSE ET DESCELLEMENT



# HISTORIQUE

## AMELIORATION DES COUPLES DE FROTTEMENT



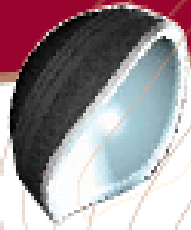
**Métasul**



**Alumine**



**Zircone**



## AUTRES CONCEPTS



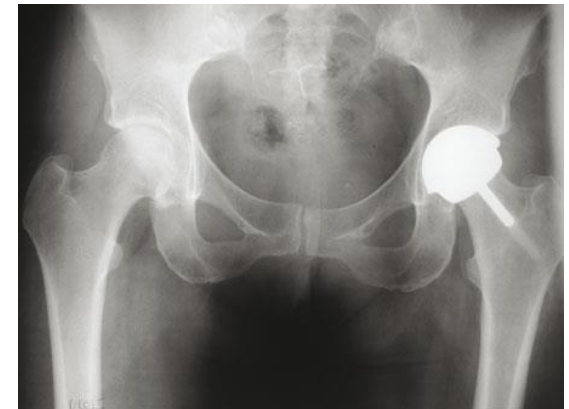
### DOUBLE MOBILITE



### RESURFACAGE



### GROSSES TETES







# CONCLUSION

- **FIXATION**

- **CIMENTEE**
- **NON CIMENTEE**

- **FROTTEMENT**

- **METAL/ POLYETHYLENE**
- **CERAMIQUE /POLYETHYLENE**
- **CERAMIQUE/ CERAMIQUE**
- **METAL /METAL**

# CONCLUSION

- PROTHESES CEPHALIQUES
- PROTHESES INTERMEDIAIRES
- PROTHESES TOTALES

